

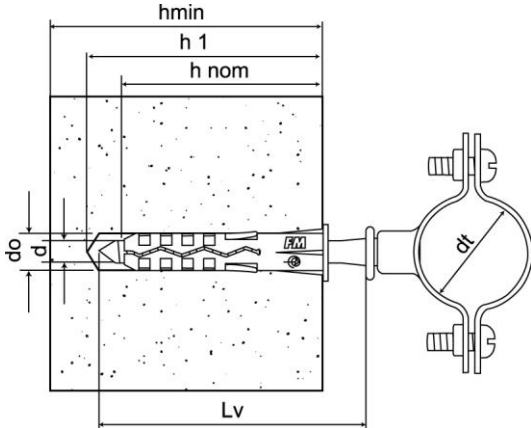
SCHEDA TECNICA - TECHNICAL SHEET

CFC

Collare per tubi e cavi
Collar for pipes and cables

Rev: 01
Pag. 1/2

DATI TECNICI - TECHNICAL DATA



do	= diametro foro / hole diameter
h1	= profondità minima foro / minimum hole depth
hnom	= profondità minima di posa / nominal embedment depth
hmin	= spessore minimo supporto / minimum support thickness
d	= diametro vite / screw diameter
dt	= diametro tubo / tube diameter
Lv	= lunghezza vite / screw length

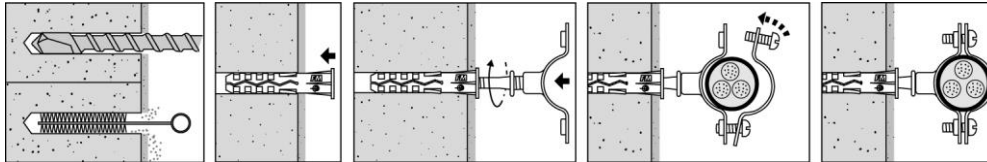
dt [mm]	do [mm]	h1 [mm]	hnom [mm]	hmin [mm]	d [mm]	Lv [mm]	Articolo completo Complete with fixing set Cod.	Solo collare Clamp only Cod.
10	6	40	30	60	4	35	50201b10000	50200b10000
12	6	40	30	60	4	35	50201b12000	50200b12000
14	6	40	30	60	4	35	50201b14000	50200b14000
16	6	40	30	60	4	35	50201b16000	50200b16000
18	6	40	30	60	4	35	50201b18000	50200b18000
20	6	40	30	60	4	35	50201b20000	50200b20000
22	6	40	30	60	4	35	50201b22000	50200b22000
24	8	50	40	80	6	60	50201b24000	50200b24000
26	8	50	40	80	6	60	50201b26000	50200b26000
28	8	50	40	80	6	60	50201b28000	50200b28000
32	8	50	40	80	6	60	50201b32000	50200b32000
38	8	50	40	80	6	60	50201b38000	
50	8	50	40	80	6	60	50201b50000	50200b50000
60	8	50	40	80	6	60	50201b60000	50200b60000

SUPPORTI - BASE MATERIALS

● idoneo / suitable applications ◐ parzialmente indicato / partially suitable applications

- | | |
|--|--|
| ● calcestruzzo / concrete | ● mattone pieno / solid brick |
| ● mattone semipieno / honeycomb brick | ◐ mattone forato / cell like clay brick |
| ● blocco forato Poroton / light weight honeycomb brick | ◐ blocco forato cemento / hollow dense aggregate block |
| ◐ blocco forato Leca / hollow light aggregate block | ● cemento cellulare / aerated concrete |
| ● pietra compatta / solid stone | |

INSTALLAZIONE - INSTALLATION



Temperatura di posa / Installation temperature:	+5 / +40 °C
Temperatura di esercizio / Working temperature:	-40 / +40 °C (max +80 °C breve periodo / for short period)
Non sono consigliate applicazioni permanenti con carichi sospesi oltre i 40°C utilizzando ancoranti plastici The use of plastic anchors is not recommended for permanent suspended loading applications above 40°C.	

SCHEDA TECNICA - TECHNICAL SHEET

CFC

Collare per tubi e cavi
Collar for pipes and cables

Rev: 01
Pag. 2/2

CARATTERISTICHE ANCORANTE - PRODUCT FEATURES

Tipo / Type	Materiale / Material	Rivestimento / Coating
Tassello / Plug	nylon Pa6	-
Vite di congiunzione / Studscrew	acciaio / steel	zincatura bianca $\geq 5\mu\text{m}$ ISO 4042 / white zinc plated $\geq 5\mu\text{m}$ ISO 4042
Collare / Collar	acciaio / steel	zincatura bianca $\geq 5\mu\text{m}$ ISO 4042 / white zinc plated $\geq 5\mu\text{m}$ ISO 4042